

Name: _____ Date: _____ Roll No: _____ sec: _____

**CH-7 ADAPTATION IN PLANTS
CH-8 ADAPTATION IN ANIMALS
CH-14 OUR ENVIRONMENT**

I.Choose the correct option.

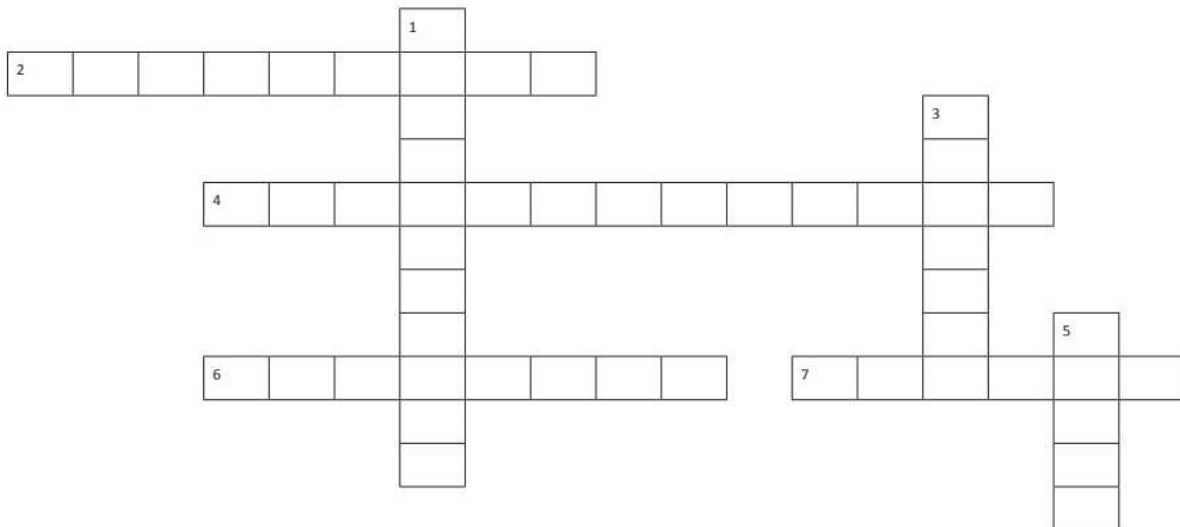
1. The mesquite bush grows _____ . ()
a. in hilly places b. underwater c. in deserts d. in plains
2. The cones of the pine tree are its _____ ()
a.flowers b. stems c. leaves d. fruits
3. Deciduous trees _____ ()
a. shed their leaves in spring and grow new leaves in winter
b. shed their leaves in winter and grow new leaves in spring
c. do not shed their leaves at all.
d. shed their leaves in summer and grow new leaves in spring
4. Mangrove trees have roots that grow _____ ()
a. in soil b. above the water c. in water d. above the soil
5. _____ gets its food from the substance on which it grows. ()
a. mould b. sunflower plant c. mango tree d. pitcher plant
6. Water pollution can cause . _____ ()
a. diseases b .soil erosion c. acid rain d. floods
7. _____ is a biodegradable material. ()
a. glass b. wood c. plastic d. gold
8. To help save the environment we should _____ ()
a. reuse and recycle b. plant trees c. try to save fuel d. do all of these
9. Animals such as snakes and rats cannot bear cold. During winter they sleep in burrows or caves This is called . _____ ()
a.aestivation b. hibernation c. camouflage d. migration

10. A camel can survive without food and water for days because it has ()
- a. thick skin b. Wide feet c. fat-filled hump d. long eyelashes

II. Circle the odd one out.

- a. tiger giraffe cow elephant
- b. monkey chameleon deer squirrel
- c. birds bats fish insects
- d. tiger stick insect zebra elephant

III. Solve the crossword with the help of the given clues.



Across:

Down:

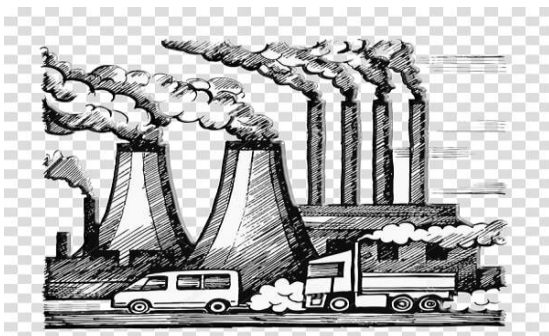
- | | |
|--|--|
| <p>2. These trees do not shed all their leaves at the same time</p> <p>4. Plants that eat insects</p> <p>6. These trees have cones with seeds on which they grow in them</p> <p>7. These plants need very little water</p> | <p>1.Plants that grow on land</p> <p>3. Plants that grow in water</p> <p>5. These get food from the plant or animal matter</p> |
|--|--|

IV. Identify the type of pollution and write two effects of each.

a.



b.



V. Mark true or false for the following statements.

- a. Some animals migrate to escape the intense heat of a place. ()
- b. Terrestrial animals breathe with the help of lungs and other organs. ()
- c. A deer defends itself by crawling on the ground. ()
- d. Fish have gills through which they breathe. ()

VI. Fill the blanks.

- 1. The loss of fertile top soil by the action of wind and water is called _____.
- 2. Substances which not rot and mix with the soil are called _____.
- 3. Animal dung can be used to make _____ gas.
- 4. Terrestrial animals breathe with the help of _____.
- 5. The regular trip that birds take to warm climates is called _____.
- 6. Animals that feed on living animals or plants are called _____.
- 7. _____ and _____ are examples of insectivorous plants.
- 8. The _____ trees grow in marshy places.